

# Workforce Focus

From the Sarnia Lambton Workforce Development Board

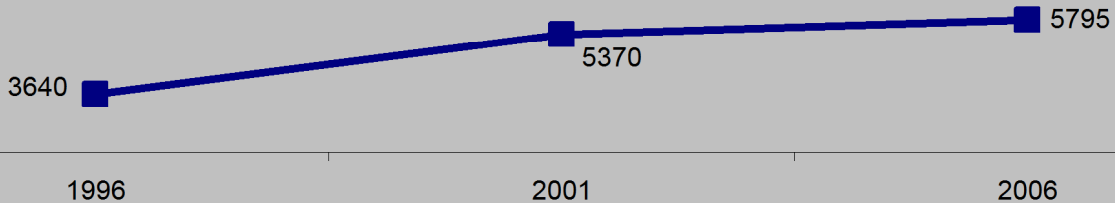
In this Issue:

Census Release

- Aboriginal Peoples

## Aboriginal Population Growth

Sarnia-Lambton

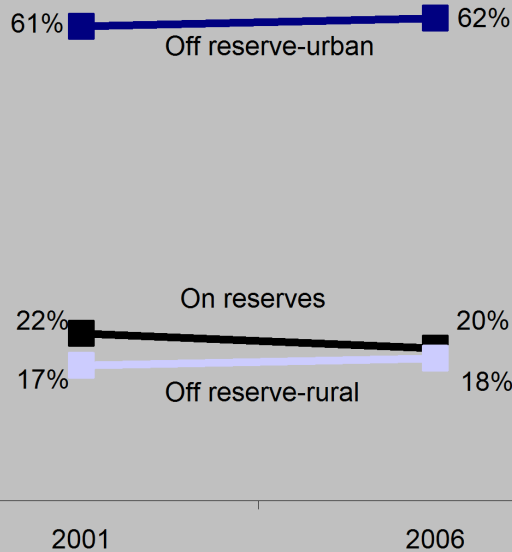


### A Steady Increase

The number of people who identified themselves as an Aboriginal person has increased steadily in this region. Most of this growth can be attributed to a high birth rate. There are also more individuals identifying themselves as an Aboriginal person, and there has been a reduction in the number of incompletely enumerated Indian reserves since 1996.

## Location Patterns

Aboriginals by place of residence  
Ontario, 2001-2006



### Urbanization

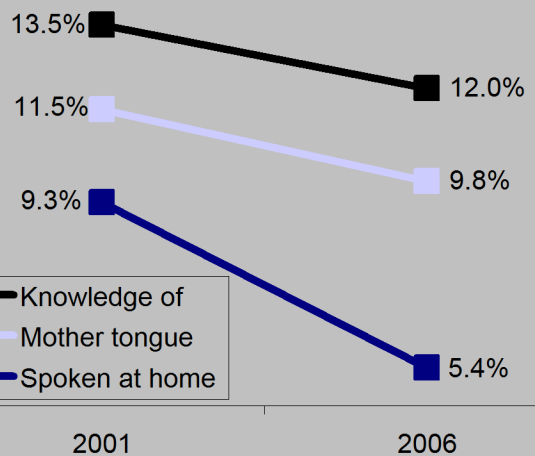
The Aboriginal population increasingly urbanized. In 2006, 62% lived in an urban centre, a slight increase from 2001. Urban areas include large cities, or census metropolitan areas, and smaller urban centres. The share of aboriginal people living on reserves has decreased to 20% in 2006, while the share living in rural areas has increased slightly.

## Fading Languages

There has been substantial erosion in the use of Aboriginal languages in recent decades. In Ontario, the share of Aboriginals who most commonly speak an Aboriginal language at home and the share whose mother tongue is Aboriginal, both dropped between 2001 and 2006. However, more people had a knowledge of an Aboriginal language than had an Aboriginal mother tongue. This suggests that some speakers must have learned their Aboriginal language as a second language. It is thought that the process itself of learning an Aboriginal language may contribute to increased self-esteem and community well-being, as well as cultural continuity.

## Language Trends

Aboriginal peoples relation to Aboriginal language  
Ontario, 2001-2006

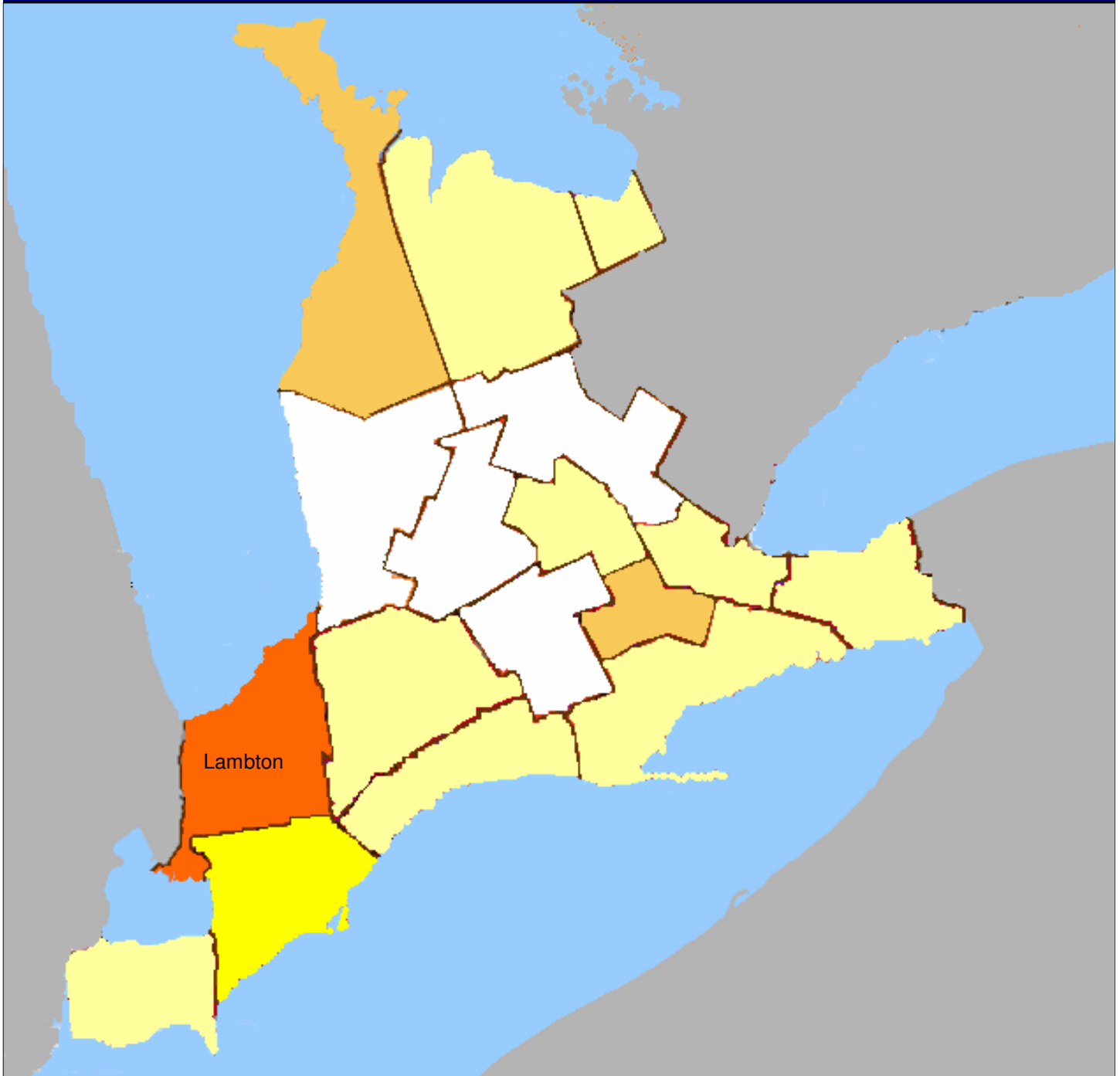


For more information contact The Sarnia Lambton Workforce Development Board at:  
265 Front St. North Suite 504, Sarnia ON. N7T 7X1 (519) 332-0000

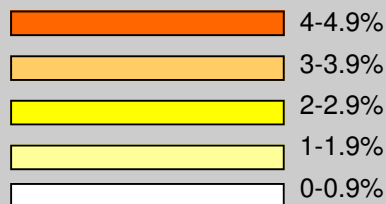
Workforce Focus is an original publication of the Elgin, Middlesex, Oxford Local Training Board

Created by : Dane Rice

## Aboriginal Concentrations

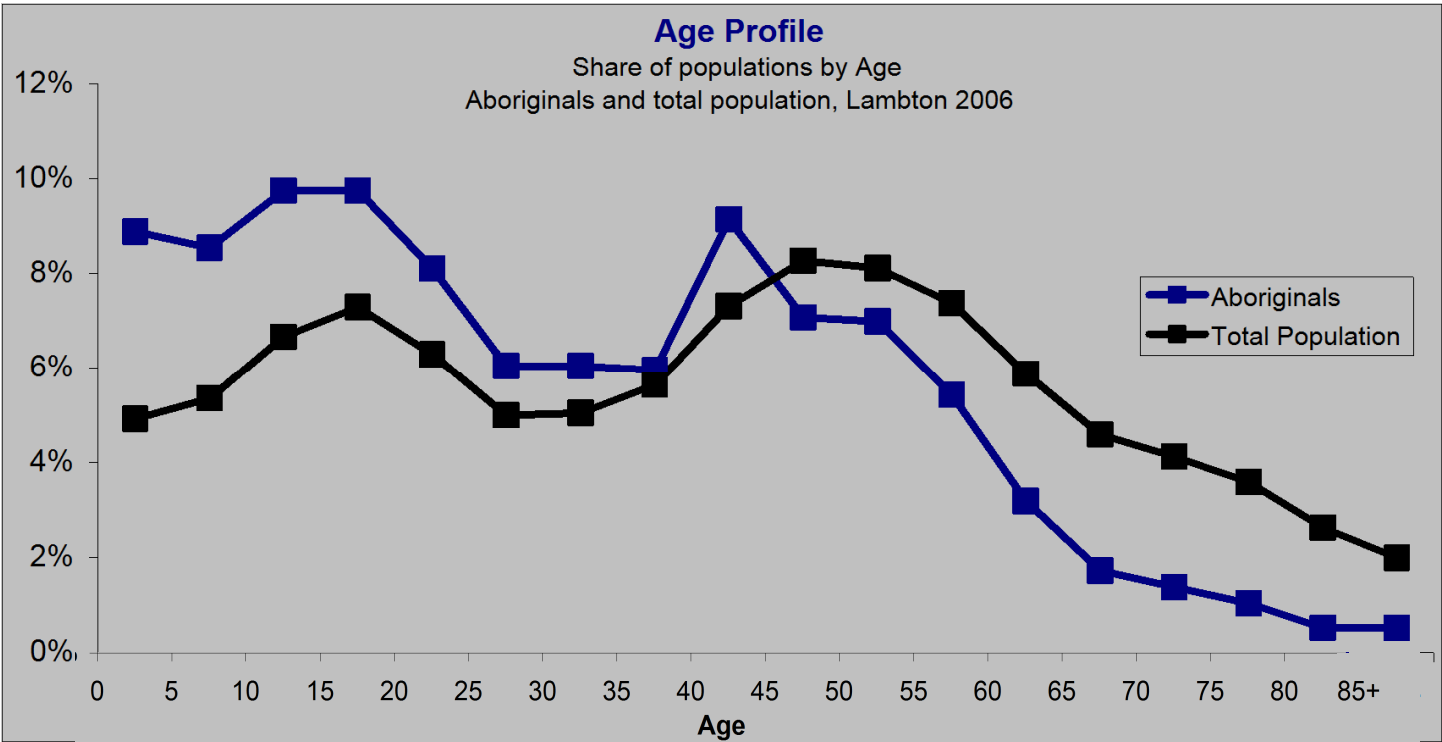


Self-identified Aboriginals as share of the total population: South-Western Ontario census divisions, 2006



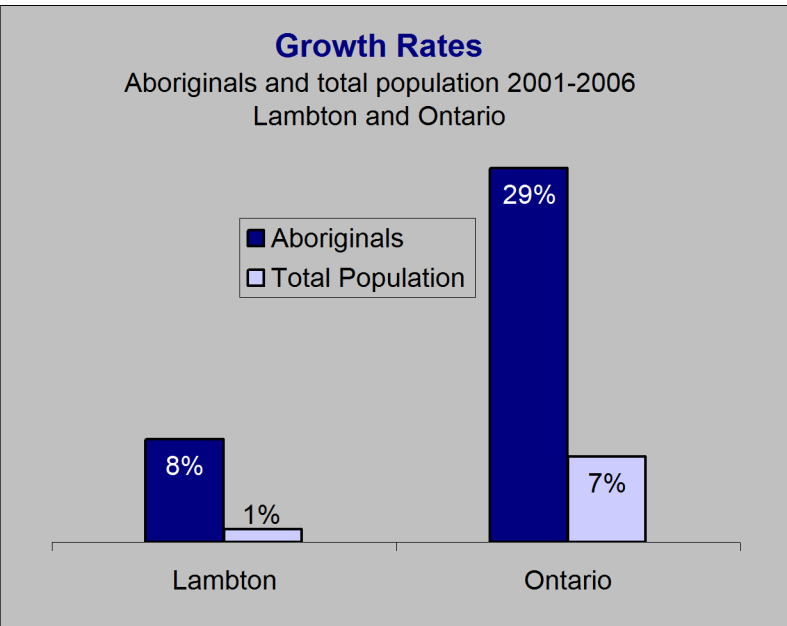
### Population Proportions

Although Ontario leads all provinces with 21% of Canada's aboriginal population, the aboriginal share of Ontario's total population is quite low at 2%. With two reserves within its boundary, Lambton exceeds this provincial average with Aboriginal people comprising 4.5% of the county's population.



#### A Youthful Population

The Aboriginal population is much younger than the general population. Children and youth of this region aged 24 and under made up 45% of all Aboriginal people, compared with 31% of the general population. Nevertheless, like the total population, the Aboriginal population is slowly getting older. The number of Aboriginal people over age 55, while relatively small, increased by 22% between 2001 and 2006. This aging of the Aboriginal population is due to declining fertility rates and gradual improvements in life expectancy. However, fertility rates remain higher than average and life expectancy still lags behind that of the total population.



#### High Growth

The Aboriginal population has grown faster than the non-Aboriginal population. Between 2001 and 2006, it increased 8% in this region, compared to just a 1% rate of growth for the general population over the same period. Collectively, Ontario experienced greater growth but a similar disparity.

### Median Ages

Lambton and Ontario, 2006

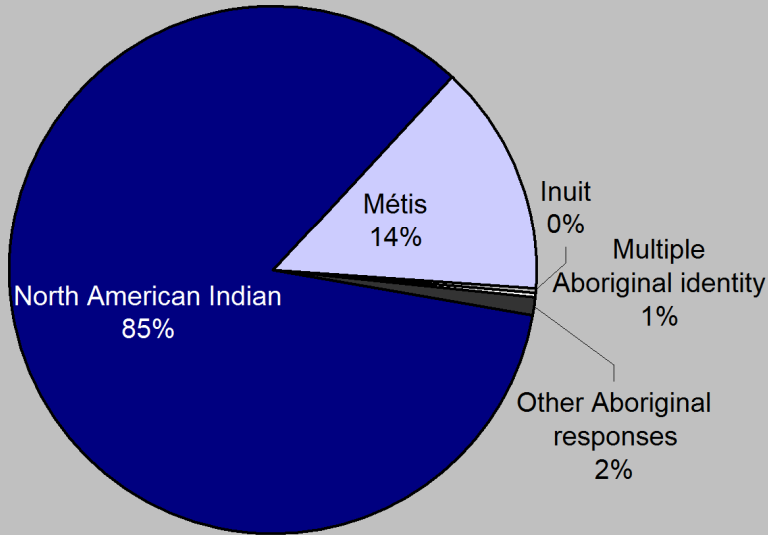
	Aboriginals	Total Population
Lambton	29	43
Ontario	30	39

#### A Low Median Age

The median age is the point where one-half of the population is older, and the other half is younger. In 2006, the median age of the Aboriginal population was significantly lower than that of the general population in Lambton and Ontario collectively.

### Aboriginal Composition

Population by Aboriginal Group  
Lambton, 2006



### Changing Composition

Of the three Aboriginal groups, the fastest gain in population between 2001 and 2006 occurred among those who identified themselves as Métis. In this region, their numbers increased 30%, to an estimated 825. The North American Indian population grew more modestly at 5% from 2001 to 2006 and now totals 4,875.

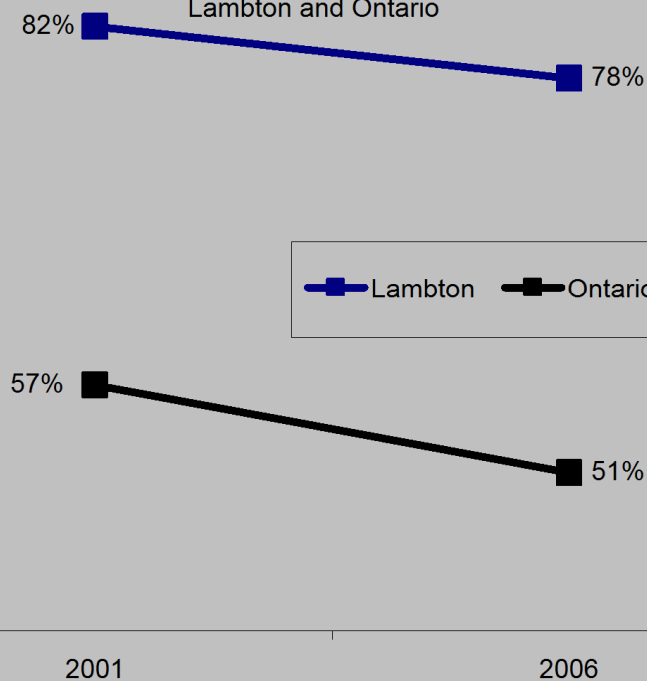
Consequently, the share of the Aboriginal population who identify as Métis has grown. In 2006, they accounted for 14% of Aboriginal people, up from 12% in 2001. First Nations people accounted for the majority (85%) of Aboriginal people in 2006.

### Registered / Treaty Status Declines

Registered Indian refers to those persons who reported they were registered under the Indian Act of Canada. Treaty Indians are persons who are registered under the Indian Act and can prove descent from a band that signed a treaty. Though this region has a much higher proportion, there has been a significant decrease in the share of registered/treaty Indians amongst aboriginals here and province wide. A majority of registered and treaty Indians in Canada reside in one of approximately 900 small First Nations communities.

### Registered/Treaty Indian Status

Registered/Treaty Indians as share of all Aboriginals  
Lambton and Ontario



The source of all figures used in this issue is Statistics Canada Census Data

**EMPLOYMENT  
ONTARIO**

SEE MORE LABOUR MARKET INFORMATION  
ON THE WEB AT [WWW.SLTB.ORG](http://WWW.SLTB.ORG)



THE VIEWS EXPRESSED IN THIS DOCUMENT DO NOT NECESSARILY REFLECT THOSE OF THE GOVERNMENT OF ONTARIO.